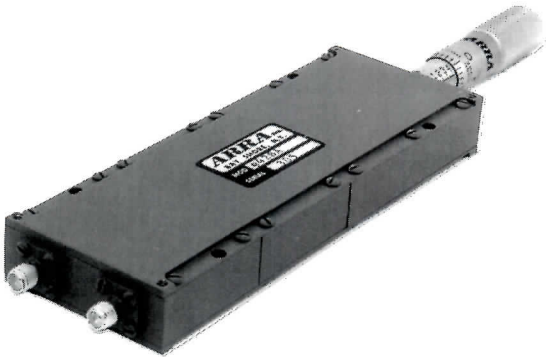


BROADBAND PHASE SHIFTERS

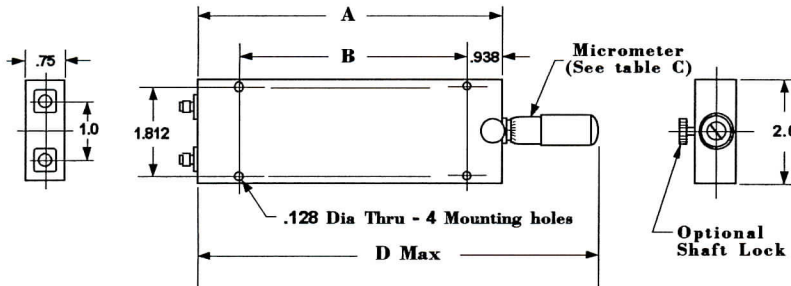
DC-18.0 GHz
Micrometer
Drive



Model 9428A



Model L9428B



Form Factor	
SMA	4350
Type N	6568

GENERAL SPECIFICATIONS

Frequency Range DC-18 GHz
 Phase Adjustment See below
 VSWR (max) 1.3 to 4 GHz
 1.5 to 12 GHz
 1.6 to 18 GHz
 Ins Loss (max) 0.5 dB to 8 GHz
 0.75 dB to 12 GHz
 1.0 dB to 18 GHz
 RF Power 100 Watts average
 5 kW peak

Connectors * SMA Female standard
 Control Micrometer

Material :
 Body Aluminum
 Connectors Stainless Steel
 Mounting Provisions 4 thru holes

Finish ARRA Blue per
 MIL-C-22750

Frequency Range (GHz)	Insertion Delay (Approx) nsec	Min Phase Adjustment	Dimensions - Inches				Model No. *
			A	B	C	D	
DC-18.0	0.88 min 1.10 max	60° / GHz 360° at 6 GHz	5.50	3.625	1.00	8.75	9428A
DC-18.0	0.68 min 0.78 max	30° / GHz 180° at 6 GHz	3.75	1.875	0.50	5.75	9428B

* To specify Type N connectors, contact factory.
 ** For shaft lock, precede model number with L. Ex: L9428A